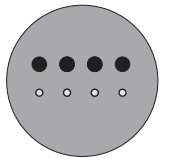


## 11.1 Ready-to-connect contact unit for test purposes LKE 600-T and LKE 600-VT



### Ready-to-connect contact unit type LKE 600-T

6 contact modules type LKT

Pneumatic central opening button

Dimensions: Cover plate 160 x 114 x 3 mm

Housing 120 x 69 mm / installation depth 45 mm



### Ready-to-connect contact unit type LKE-600-VT

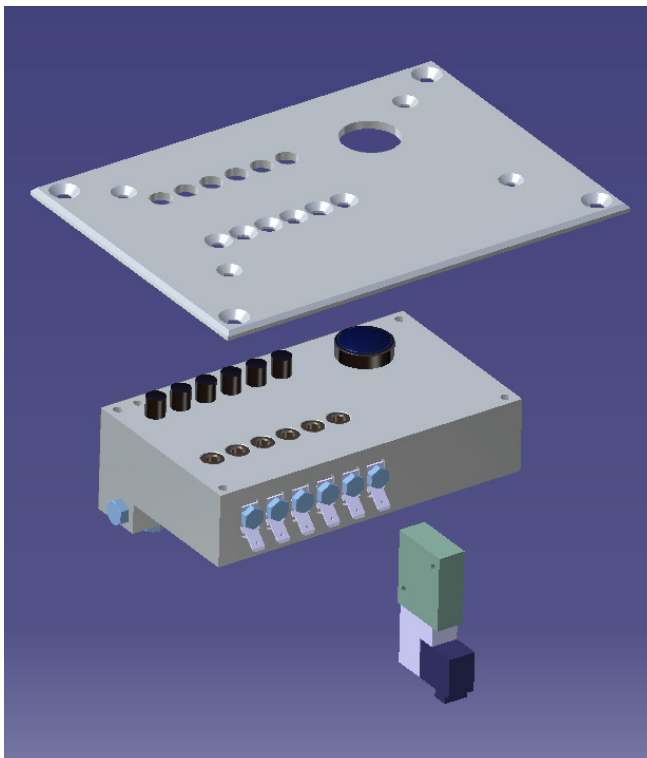
6 contact modules type LKT

Solenoid valve 24V=

3-Pin central opening button

Dimensions: Cover plate 160 x 114 x 3 mm

Housing 120 x 69 mm / installation depth 70 mm



### Function

The contact opening is closed when the compressed air is switched on.

After pressing the LKT button, the cable can be plugged in.

When releasing the button, the cable makes contact.

Once your product has been tested, the central opening button or the solenoid valve is used to open the modules.

### Technical data

Housing block plastic POM black, 6 contact modules

Pitch 10 mm Pneumatic connection 6 bar.

Flat plug electrical connections 4.8 x 0.8 mm

Diameter of cable holders 1.5 to 4.0 mm

Cover plates, black or light gray, to be selected.