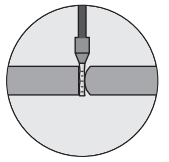


1.2 Single components for automation and testing technology

Standard modules of the LKV-12 model series



Order data

3 different clamping hole diameters are available for adjusting the clamping task. Conductors, connector parts etc. with different dimensions can be thereby bonded safely. Furthermore, two versions are available.

Type **O** without cover plate for installation into the customer's mounting plate

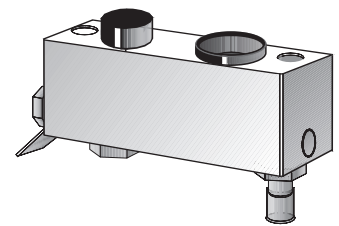
Type **A** with extensible cover plate

– Order No.: **LKV-D4-O-F2** (bonding outlet 4 mm)

– Order No.: **LKV-D6-O-F2** (bonding outlet 6 mm)

– Order No.: **LKV-D9-O-F2** (bonding outlet 9 mm)

Special versions upon request

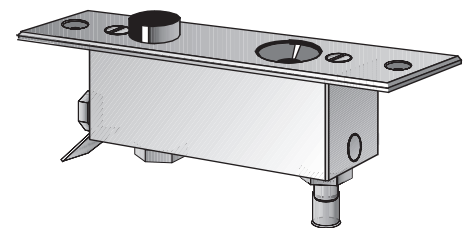


– Order No.: **LKV-D4-A-F2** (bonding outlet 4 mm)

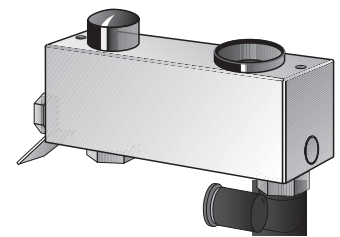
– Order No.: **LKV-D6-A-F2** (bonding outlet 6 mm)

– Order No.: **LKV-D9-A-F2** (bonding outlet 9 mm)

Special versions upon request



The standard version includes a 3 mm straight compressed air connector. If you need a swivelling angular connection, replace the „2“ in the order number by „**WS**“



For bonding smooth surfaces such as wire-end sleeves, etc. we recommend to use a clamping piston with cap. Use for this purpose the additional note „**WK**“ in your order.

(order example LKV-D4-A-F2/WK)

Please take note of our special accessories such as pneum. central opener.